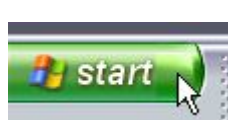


UP Wireless-VPN HOW-TO

Updated: May 2004

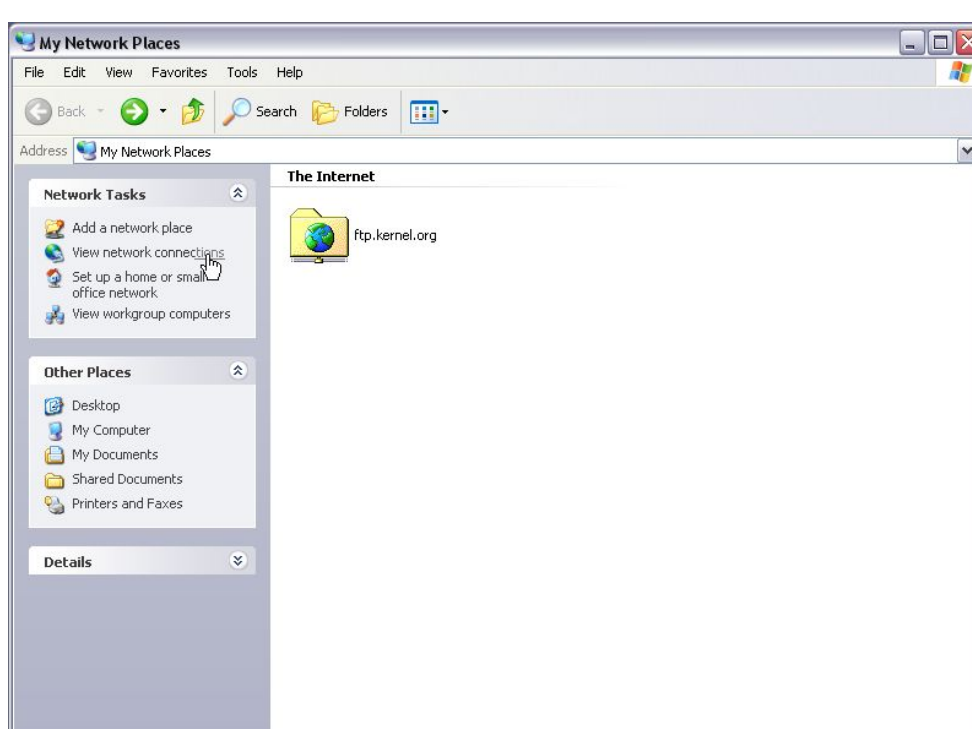
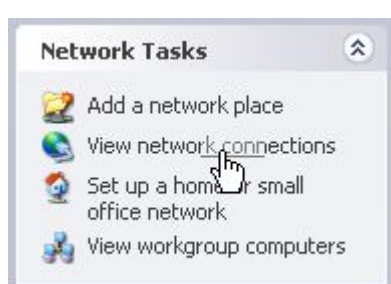
Click on the Start button



Select My Network Places

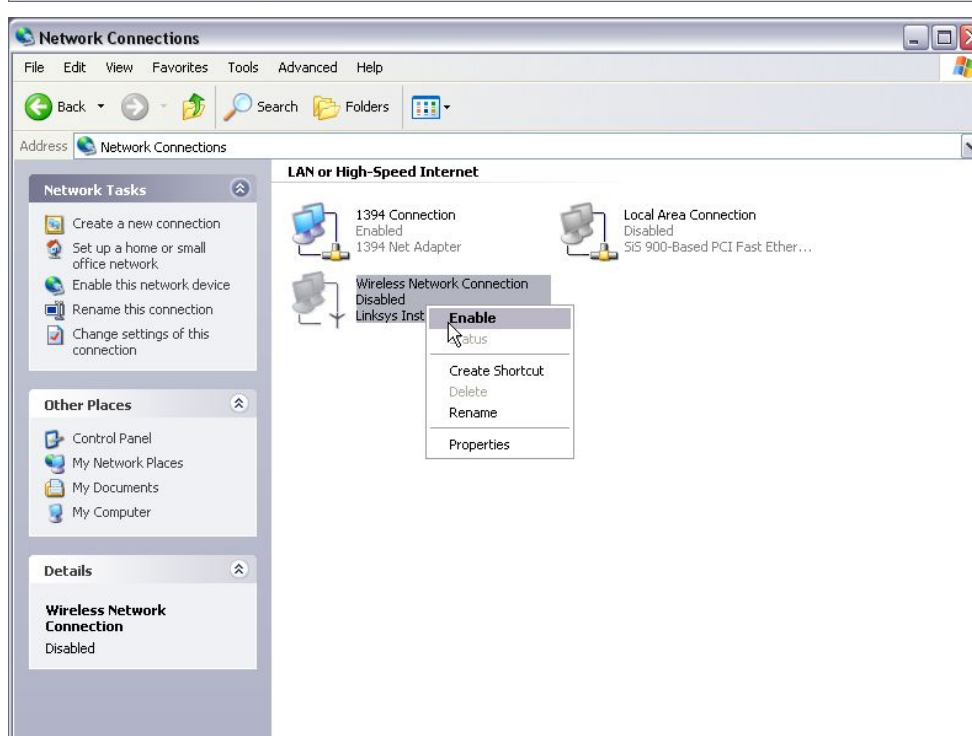


Click on View network connections



Make sure the wireless connection is enabled

Click on Create a new connection



Click on Next



Select Connect to the network at my workplace

Click on Next



Select Virtual Private Network connection

Click on Next



Supply the following information:

Company Name: UP

Click on Next



Select Do not dial the initial connection.

Click on Next



Host name or IP address: wvpn.up.edu.ph

Click on Next



Click on Add a shortcut to this connection to my desktop

Click on Finish



Double click on the UP shortcut icon on your desktop



Supply your UP VPN username and password to connect

Click on Connect



You are now connected to the Diliman Network through a Wireless Virtual Private Network

